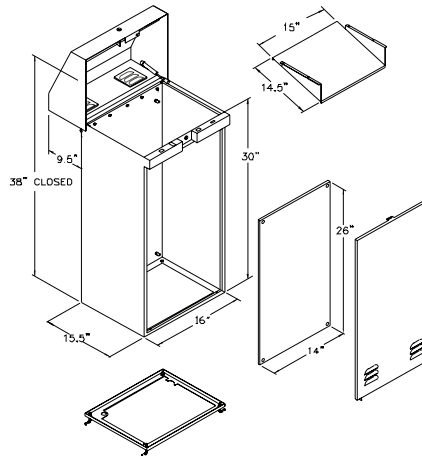


**SB-16SS  
16" Wide Enclosure**

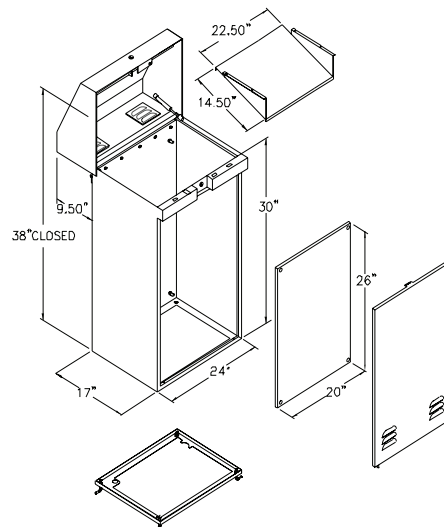
- 16" Wide, 38" High, 15.5" Deep
- Heavy-duty continuous hinge
- Three point locking latch with padlock provisions
- Standard tray and backboard included
- Mounting template and J bolt anchors included
- NEMA TYPE 3R Weatherproof

**SPECIFICATION ON PAGE 14****PED-16SS  
12" Riser Pedestal**

- 16" Wide, 12" High, 15.5" Deep
- Stainless Steel
- Hardware installed

**SB-22SS  
24" Wide Enclosure**

- 24" Wide, 38" High, 17" Deep
- Heavy-duty continuous hinge
- Three point locking latch with padlock provisions
- Standard tray and backboard included
- Mounting template and J bolt anchors included
- NEMA TYPE 3R Weatherproof

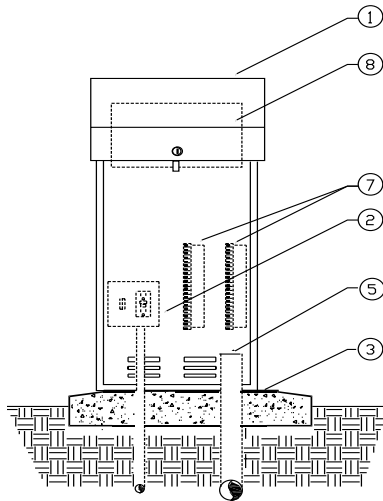
**SPECIFICATION ON PAGE 14**

## TOP ENTRY ENCLOSURE

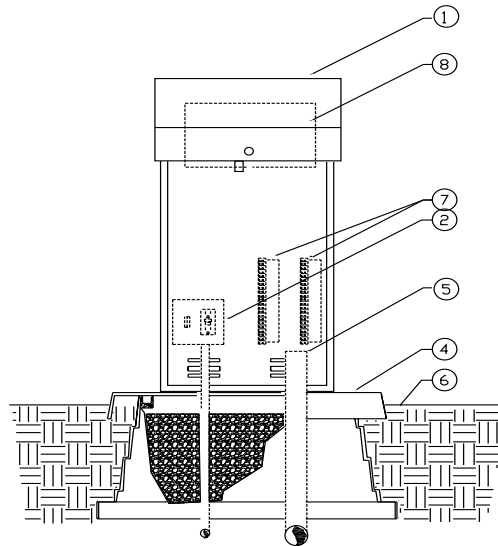
MODELS: SB-16SS, SB-22SS

### INSTALLATION DETAILS

TOP ENTRY ENCLOSURE  
WITH CONCRETE PAD



TOP ENTRY ENCLOSURE  
ON QUICKPAD BASE



1. Controller enclosure
2. 120 volt service in conduit
3. Poured concrete base—6" min. thickness—  
extend concrete 4" beyond outside dimensions of  
enclosure with 1/2% slope for drainage
4. QuickPad mounting base

5. Direct burial control wires to control valves
6. Finish grade
7. Controller sub-assembly (CSA) includes GFI  
& terminal strips with placards
8. Automatic controller

### SPECIFICATIONS

This top entry enclosure is a vandal and weather resistant enclosure formed entirely of stainless steel. The main housing is louvered to allow for cross flow ventilation with filter screens to deflect against water spray, insects and dust. A removable stainless steel tray and backboard are provided for mounting electronics and other types of equipment. The

backboard mounts on four stainless steel bolts in the lower body. The top entry lid includes a stainless steel piano hinge at the rear and a three point locking mechanism at the front with two gas springs to assist with opening and closing. A cam style lock secures the flush mounted front entry door and includes provisions for a padlock. A continuous drainage

channel around all sides of door face provides a water-tight seal with the tear drop shaped, hollow center, thermoplastic door seal. The inside door also provides adequate storage for instructions or plans. This enclosure is NEMA 3R rated and UL 508A listed.