

PWP Power Pedestal

- 17" Wide, 31" High, 17" Deep
- 100% Stainless Steel
- All access points include padlock provisions
- NEMA TYPE 3R Rated and UL 508A Listed
- Anchor bolts included for installation
- 10 Year Limited Warranty
- Utility section houses landing lugs



CUSTOMER SECTION

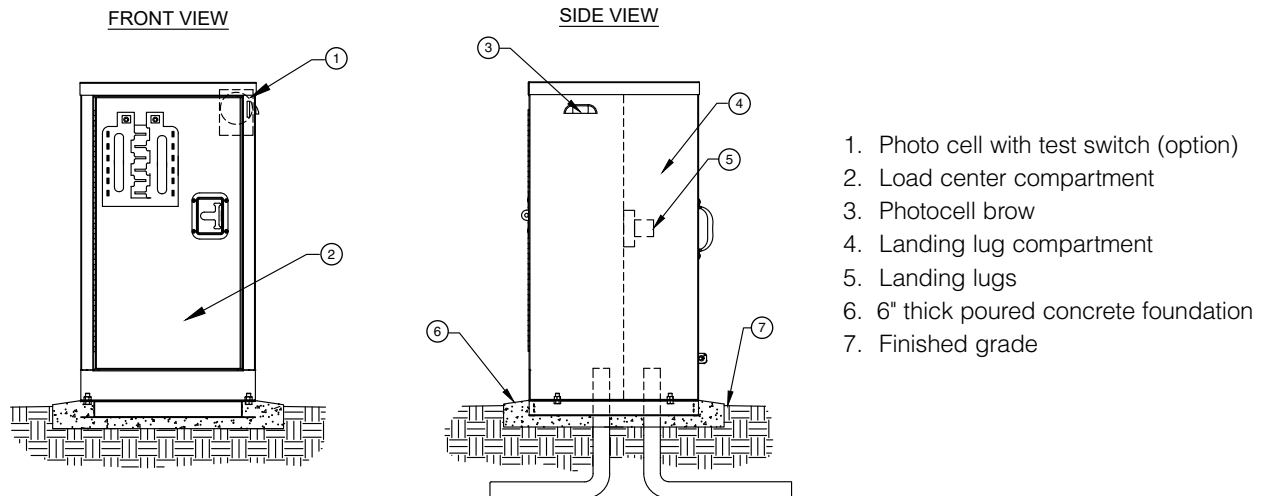
- 15" Wide, 11" High, 7" Deep usable area
- 100-200 amp load centers with up to 16 circuits

SPECIFICATIONS ON PAGE 53



PWP Standard Model Numbers

Model No	Main Amps	Voltage	Phase	Wires	AIC Rating	Breaker Positions
PWP-11016-10	100	120/240	1	3	10,000	16
PWP-11016-22	100	120/240	1	3	22,000	16
PWP-11016-65	100	120/240	1	3	65,000	16
PWP-12016-22	200	120/240	1	3	22,000	16
PWP-12016-65	200	120/240	1	3	65,000	16

INSTALLATION DETAILS**PWP
POWER PEDESTAL****SPECIFICATIONS**

This power pedestal is a vandal and weather resistant enclosure formed entirely from stainless steel with a #4 brushed finish. The utility landing section is located on the rear side with a removable panel for full access to the landing lugs. The landing lugs are made of aluminum using hex drive screws for tightening. The 17 x 30 inch customer electrical compartment is

located on the front and is capable of housing up to a 16 circuit load center with a removable dead front protective panel so that only the breaker switches are exposed. A stainless steel electrical backboard is provided for ease of wiring and grounding of electrical components. The customer compartment is outfitted with a continuously welded and

hemmed, stainless steel door that uses a T-handle latching system. All doors are equipped with water shedding drainage channels and provisions for a padlock, ensuring a watertight and vandal resistant design. This enclosure is NEMA 3R rated and UL 508A listed and complies with current NEC codes.